

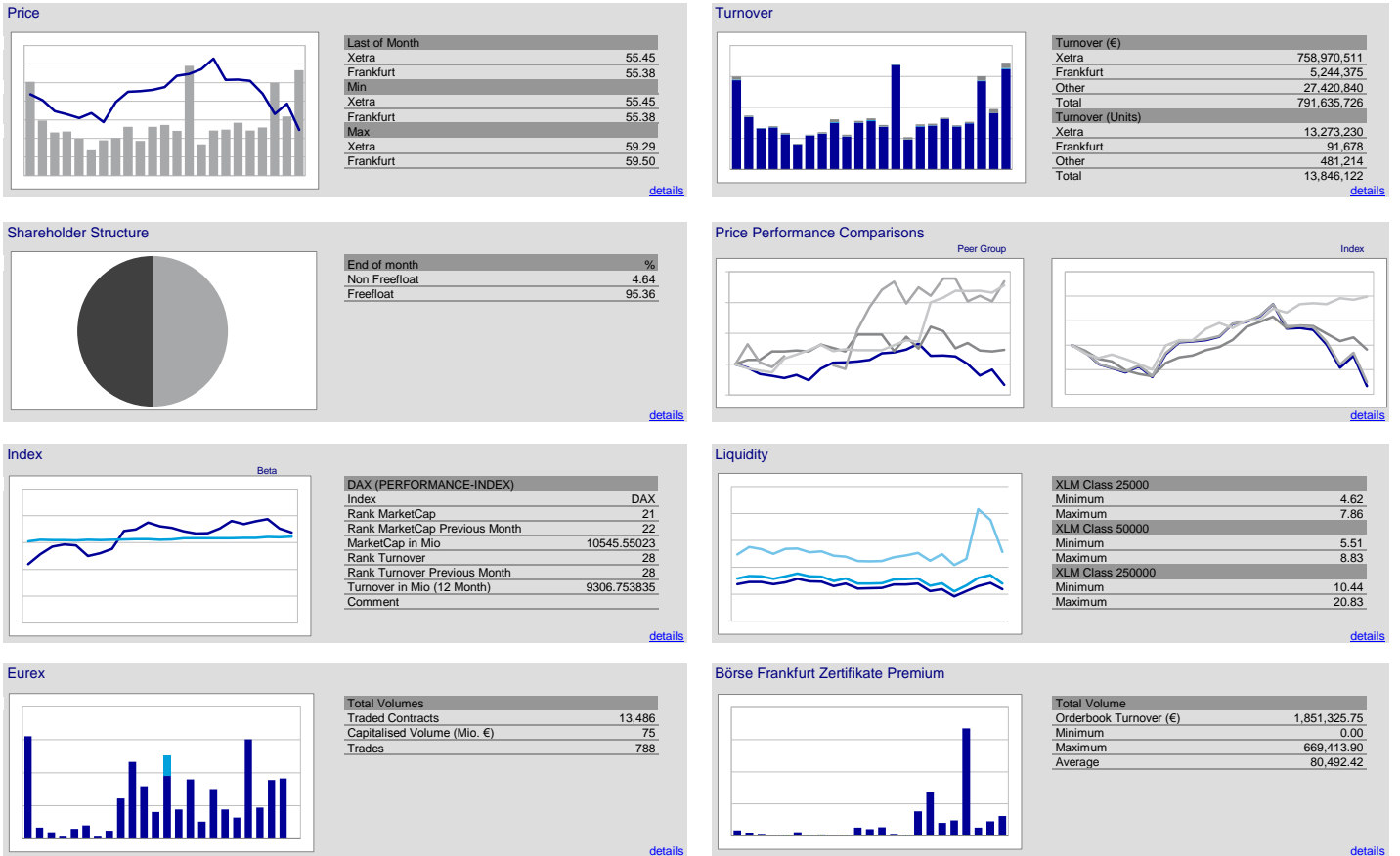


Overview

DEUTSCHE BOERSE NA O.N.

ISIN: DE0005810055
 WKN: 581005
 Symbol: DB1
 Description: Deutsche Börse AG
 Country: Germany
 Specialist: RENELL WERTPAPIERHANDELSBANK AG
 Designated Sponsors: BNP PARIBAS ARBITRAGE SNC
 KERDOS INVESTMENT-AG TGV

Transparency Level: Prime Standard
 Xetra Market Segment: Prime Standard (RM)
 Xetra Trading Model: CONT TRDG INCL AUCT
 Frankfurt Market Segment: CONTINUOUS AUCTION BY SPECIALIST
 Frankfurt Trading Model: Xetra Frankfurt 2 - (RM)
 Supersector: FIRE (Financials u. Real Estate)
 Sector: Financial services
 Subsector: Securities Brokers
 Affiliation Leading Indices: DAX (PERFORMANCE-INDEX)
 PRIME ALL SH. P-IN.



Reported Month: October 2013

Contact: Issuer&Primary Market Relations | StockReport@deutsche-boerse.com | Tel. +49 69 211 18888 | Fax: +49 69 211 14333

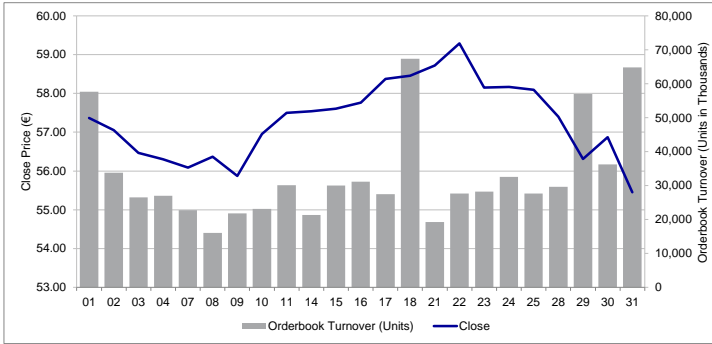
[Explanation and legal disclaimer](#)

Price

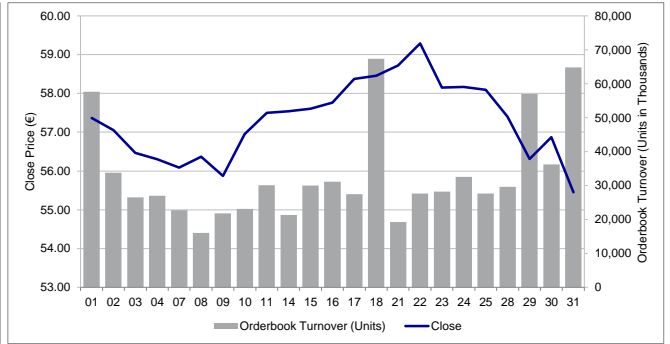
DEUTSCHE BOERSE NA O.N.

[Back to Overview](#)

Xetra

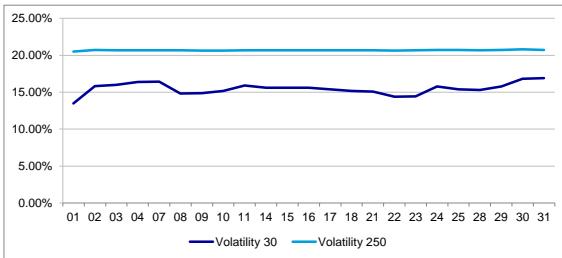


Frankfurt



Day	Xetra							Frankfurt						
	Open	High	Low	Close	VWAP	Orderbook Turnover (€)	Orderbook Turnover (Units)	Open	High	Low	Close	VWAP	Orderbook Turnover (€)	Orderbook Turnover (Units)
10/01/2013	55.72	57.55	55.65	57.37	57.11	1,009,209	57,631,295.54	55.31	57.48	55.31	57.20	56.82	6,993	397,327.36
10/02/2013	57.29	57.30	56.87	57.05	57.06	591,409	33,745,527.12	57.40	57.40	56.81	56.81	57.07	2,224	126,926.66
10/03/2013	56.85	56.87	56.47	56.47	56.56	469,437	26,551,754.45	56.79	56.79	56.50	56.50	56.71	756	42,869.33
10/04/2013	56.26	56.68	55.85	56.30	56.24	480,411	27,016,382.30	56.31	56.37	55.77	56.27	56.00	3,119	174,676.17
10/07/2013	55.89	56.53	55.18	56.09	55.82	407,063	22,722,449.50	56.00	56.22	55.32	55.99	56.48	1,799	99,808.24
10/08/2013	55.95	56.58	55.90	56.37	56.38	285,284	16,085,283.34	56.37	56.52	56.15	56.27	56.31	1,448	81,533.62
10/09/2013	56.01	56.11	55.73	55.87	55.94	389,202	21,770,648.03	56.15	56.15	55.65	55.94	55.91	3,148	175,992.70
10/10/2013	56.00	57.00	55.82	56.95	56.62	408,264	23,116,592.16	55.81	56.96	55.81	56.88	56.79	928	52,697.91
10/11/2013	57.07	58.23	57.07	57.50	57.68	521,132	30,061,333.51	57.03	58.15	56.91	57.61	57.78	7,280	420,634.86
10/14/2013	57.07	57.90	57.07	57.54	57.54	369,846	21,282,118.04	57.00	57.74	57.00	57.69	57.35	2,112	121,129.29
10/15/2013	57.58	57.65	57.08	57.61	57.46	522,124	30,003,790.60	57.79	57.79	57.20	57.44	57.48	4,825	277,341.48
10/16/2013	57.16	58.20	57.14	57.76	57.73	538,690	31,100,282.21	57.74	58.15	57.50	57.74	57.89	9,697	561,406.78
10/17/2013	57.52	58.50	57.25	58.37	58.14	472,446	27,470,030.90	57.88	58.50	57.37	58.50	58.04	4,195	243,460.05
10/18/2013	58.67	58.71	57.99	58.46	58.42	1,153,664	67,400,212.65	58.25	58.59	58.16	58.16	58.42	1,820	106,327.88
10/21/2013	58.19	58.72	57.96	58.72	58.47	329,620	19,272,139.18	58.65	58.68	58.10	58.60	58.46	3,444	201,343.37
10/22/2013	58.53	59.29	58.27	59.29	58.98	468,390	27,626,104.33	58.45	59.50	58.33	59.50	59.10	6,257	369,791.31
10/23/2013	58.95	59.13	57.96	58.15	58.34	483,992	28,238,220.08	59.20	59.20	57.96	58.20	58.31	4,116	240,023.15
10/24/2013	58.63	58.65	57.75	58.17	58.15	559,741	32,546,593.24	58.30	58.30	58.07	58.15	58.22	1,207	70,269.07
10/25/2013	57.71	58.10	57.32	58.09	57.92	477,506	27,658,071.24	58.28	58.28	57.73	57.88	57.92	2,571	148,910.36
10/28/2013	57.98	58.50	57.14	57.40	57.72	513,321	29,628,686.61	58.05	58.43	56.85	57.09	57.59	3,253	187,345.74
10/29/2013	57.01	57.06	55.55	56.31	56.35	1,011,841	57,016,649.16	56.95	56.95	55.65	56.40	56.30	6,749	379,980.05
10/30/2013	56.13	57.20	56.13	56.87	56.81	638,249	36,260,997.94	56.51	57.10	56.20	56.83	56.52	3,349	189,299.04
10/31/2013	56.35	56.35	54.58	55.45	55.24	1,172,389	64,765,348.44	56.40	56.50	54.60	55.38	55.38	10,388	575,280.57

Volatility

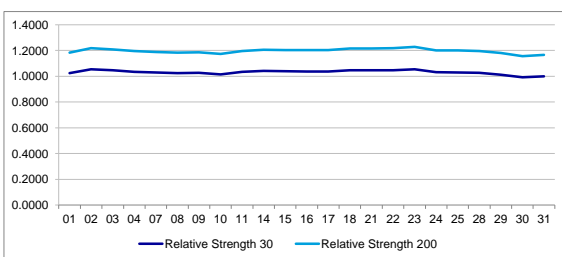


Measure of the extent to which the price of a security or an index fluctuates around a mean value during a fixed period of time.

Volatility provides a means of measuring a stock's potential for profit or loss independent of market development. It assumes that past values are an indication of future performance. Because the volatility ratio expresses the extent to which the value of a security can be expected to change in the future, it plays a particularly important role in the calculation of options prices.

Volatility is calculated for periods of 30 to 250 days.

Relative Strength

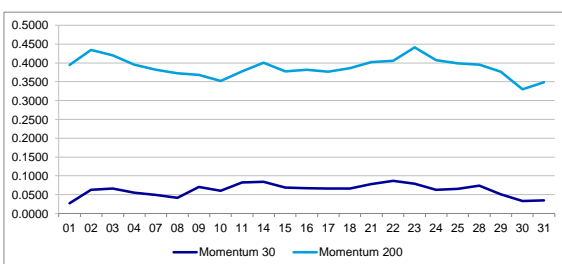


The concept of relative strength (RSL) according to Levy is based on the assumption that securities which exhibited a large relative strength in the past will also develop relatively strongly in future, and conversely. Here it is not the relative strengths of several instruments which are compared with each other, but the performance of the past with the performance of today.

For the calculation, the closing price of the instrument is divided by the arithmetic mean of the closing prices over the observation period. The result is plotted around the 1.0 mark.

If an instrument has an RSL of greater than 1, it exhibits greater price strength today than in the past, whilst if it has a RSL of less than 1, the instrument is tending to greater weakness than in the past.

Momentum



Momentum is an indicator of the direction and rate of change in stock price movements.

It is calculated as the difference between the current and previous price of a stock, divided by the previous price. It can be computed hourly, daily, weekly, or monthly. In a diagram, the momentum of a stock is usually depicted as a curve that fluctuates around a zero line. If the curve crosses the zero line from below, this is understood as a signal to buy. If the momentum curve crosses the zero line from above, it is considered to be a signal to sell.

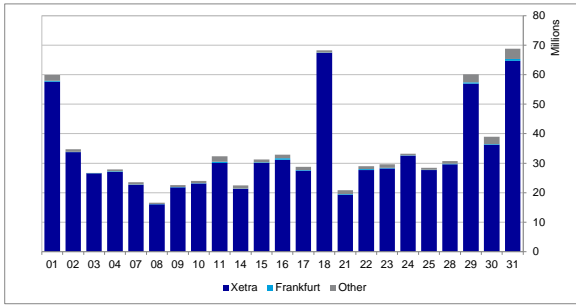


Turnover

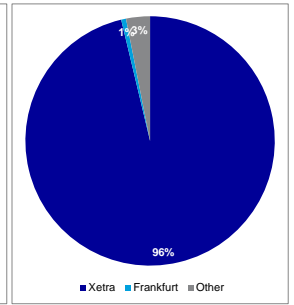
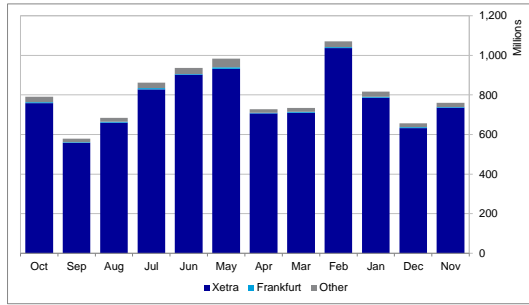
DEUTSCHE BOERSE NA O.N.

Back to Overview

Turnover by day - October 2013



Turnover for the last 12 month



Turnover by day - October 2013

Table with columns for Day Calendar, Xetra (Volume, %), Frankfurt (Volume, %), Other (Volume, %), and Total (Volume, %). It lists daily turnover data for October 2013.

Turnover for the last 12 months

Table with columns for Month, Xetra (Volume, %), Frankfurt (Volume, %), Other (Volume, %), and Total (Volume, %). It lists monthly turnover data for the last 12 months.

Turnover by Member - October 2013

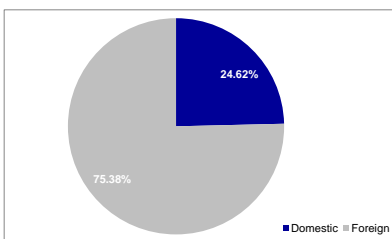
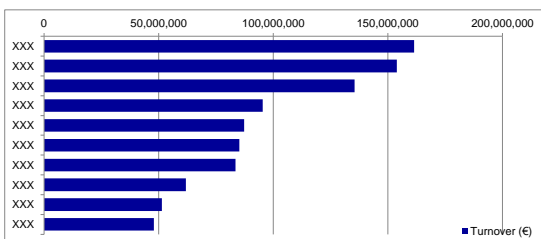


Table with columns: Member, Total Turnover (EUR), %, Running %. It lists turnover data for individual members.

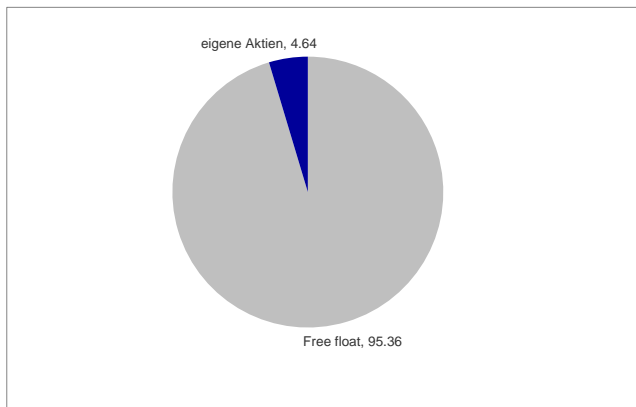
Table with columns: %, Total Turnover (EUR). It summarizes the Domestic and Foreign turnover percentages and totals.

Shareholder Structure

DEUTSCHE BOERSE NA O.N.

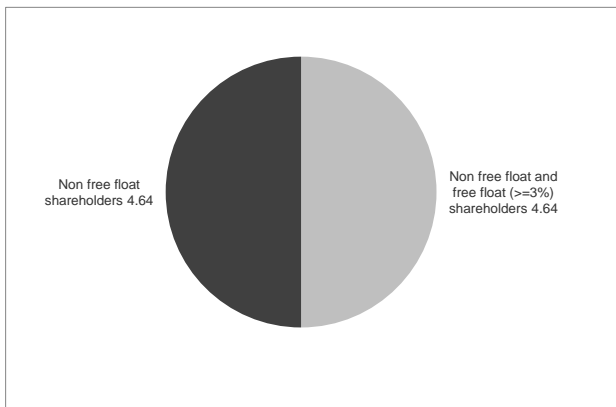
[Bac](#)

Shareholder structure at the last day of October 2013



Shareholder	Holding in percent
All shareholders	4.64
Free float	95.36
eigene Aktien	4.64

Free float structure at the last day of October 2013



Shareholder	Holding in percent
Non free float and free float (>=3%)	4.64
Small investors	95.36
Non free float shareholders	4.64

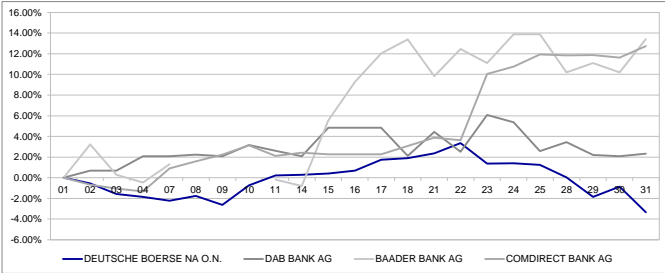
We are using the number of shares and the holdings of particular investors for the calculation of our equity indices and are concerned to keep these data as accurate and up-to-date as possible. In case you have further questions, new information or corrections with respect to issued capital or shareholder structure please contact stoxindex@stox.com.

Price Performance Comparisons

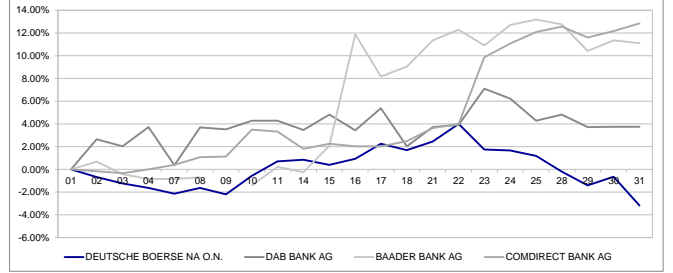
DEUTSCHE BOERSE NA O.N.

Peer group comparison

Xetra



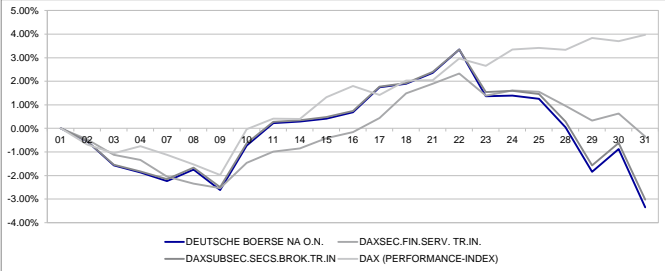
Frankfurt



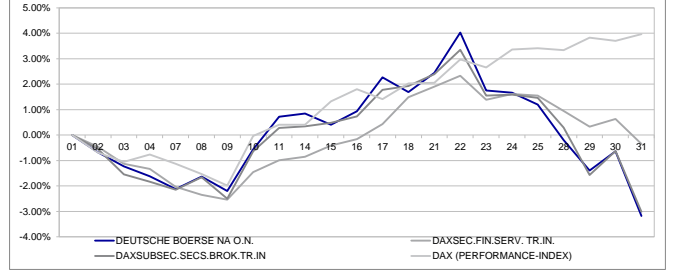
Day Calendar	DEUTSCHE BOERSE NA O.N.		DAB BANK AG		BAADER BANK AG		COMDIRECT BANK AG	
	Adjusted Price	Mixed Performance in %	Adjusted Price	Mixed Performance in %	Adjusted Price	Mixed Performance in %	Adjusted Price	Mixed Performance in %
10/01/2013	1.651.51	0.00%	5.90	0.00%	17.25	0.00%	12.82	0.00%
10/02/2013	1.642.30	-0.56%	5.94	0.69%	17.81	3.24%	12.73	-0.69%
10/03/2013	1.625.60	-1.57%	5.94	0.69%	17.30	-0.28%	12.68	-1.05%
10/04/2013	1.620.71	-1.87%	6.02	2.07%	17.17	-0.46%	12.65	-1.32%
10/07/2013	1.614.67	-2.23%	6.02	2.07%	17.48	1.30%	12.93	0.90%
10/08/2013	1.622.73	-1.74%	6.03	2.23%	17.12	-0.79%	13.02	1.57%
10/09/2013	1.608.33	-2.61%	6.02	2.07%	16.85	-2.31%	13.10	2.25%
10/10/2013	1.639.42	-0.73%	6.08	3.17%	17.22	-0.19%	13.09	2.11%
10/11/2013	1.655.26	0.23%	6.05	2.62%	17.12	-0.79%	13.13	2.44%
10/14/2013	1.656.41	0.30%	6.02	2.07%	18.95	9.91%	13.32	3.89%
10/15/2013	1.658.42	0.42%	6.18	4.83%	18.21	5.56%	13.11	2.26%
10/16/2013	1.662.74	0.68%	6.18	4.83%	18.85	9.26%	13.11	2.27%
10/17/2013	1.680.30	1.74%	6.18	4.83%	19.33	12.04%	13.11	2.27%
10/18/2013	1.682.89	1.90%	6.02	2.12%	19.56	13.38%	13.21	3.08%
10/21/2013	1.680.38	2.35%	6.16	4.44%	19.95	9.91%	13.32	3.89%
10/22/2013	1.706.78	3.35%	6.04	2.51%	19.40	12.45%	13.28	3.62%
10/23/2013	1.673.97	1.36%	6.25	6.07%	19.17	11.11%	14.10	10.04%
10/24/2013	1.674.54	1.39%	6.21	5.38%	19.65	13.89%	14.20	10.77%
10/25/2013	1.672.24	1.26%	6.05	2.67%	19.55	13.89%	14.34	11.92%
10/28/2013	1.652.38	-0.05%	6.10	3.45%	19.01	10.19%	14.33	11.83%
10/29/2013	1.621.00	-1.85%	6.03	2.21%	19.17	11.11%	14.34	11.88%
10/30/2013	1.637.12	-0.87%	6.02	2.07%	19.01	10.19%	14.31	11.81%
10/31/2013	1.596.24	-3.35%	6.03	2.34%	19.57	13.43%	14.45	12.74%

Index comparison

Xetra



Frankfurt



Day Calendar	DEUTSCHE BOERSE NA O.N.		DAXSEC.FIN.SERV. TR.IN.		DAXSUBSEC.SEC.SBROK.TR.IN.		DAX (PERFORMANCE-INDEX)	
	Price	Performance in %	Price	Performance in %	Price	Performance in %	Price	Performance in %
10/01/2013	1.651.51	0.00%	867.86	0.00%	438.04	0.00%	8.689.14	0.00%
10/02/2013	1.642.30	-0.56%	863.80	-0.47%	435.62	-0.55%	8.629.42	-0.69%
10/03/2013	1.625.60	-1.57%	856.29	-1.12%	431.27	-1.55%	8.597.91	-1.05%
10/04/2013	1.620.71	-1.87%	858.10	-1.33%	430.01	-1.83%	8.622.97	-0.76%
10/07/2013	1.614.67	-2.23%	850.16	-2.04%	428.63	-2.15%	8.591.58	-1.12%
10/08/2013	1.622.73	-1.74%	847.50	-2.35%	430.77	-1.56%	8.555.89	-1.53%
10/09/2013	1.608.33	-2.61%	845.81	-2.54%	427.09	-2.50%	8.516.69	-1.98%
10/10/2013	1.639.42	-0.73%	855.23	-1.46%	435.24	-0.64%	8.685.77	-0.04%
10/11/2013	1.655.26	0.23%	859.26	-0.99%	439.25	0.28%	8.724.83	0.41%
10/14/2013	1.656.41	0.30%	860.43	-0.96%	439.56	0.35%	8.723.81	0.40%
10/15/2013	1.658.42	0.42%	864.29	-0.41%	440.13	0.48%	8.804.44	1.33%
10/16/2013	1.662.74	0.68%	866.47	-0.16%	441.25	0.73%	8.846.00	1.81%
10/17/2013	1.680.30	1.74%	871.65	0.44%	445.80	1.77%	8.811.98	1.41%
10/18/2013	1.682.89	1.90%	880.77	1.49%	446.46	1.92%	8.865.10	2.03%
10/21/2013	1.680.38	2.35%	884.32	1.90%	448.52	2.39%	8.867.22	2.05%
10/22/2013	1.706.78	3.35%	888.11	2.33%	452.70	3.35%	8.947.46	2.97%
10/23/2013	1.673.97	1.36%	879.92	1.39%	444.81	1.55%	8.919.86	2.66%
10/24/2013	1.674.54	1.39%	881.82	1.61%	445.00	1.59%	8.980.63	3.35%
10/25/2013	1.672.24	1.26%	881.34	1.55%	444.43	1.46%	8.985.74	3.41%
10/28/2013	1.652.38	-0.05%	876.12	0.95%	439.30	0.29%	8.978.65	3.33%
10/29/2013	1.621.00	-1.85%	870.70	0.33%	431.15	-1.57%	9.022.04	3.83%
10/30/2013	1.637.12	-0.87%	873.36	0.63%	435.30	-0.63%	9.010.27	3.70%
10/31/2013	1.596.24	-3.35%	864.84	-0.35%	424.81	-3.02%	9.033.92	3.97%

Day Calendar	DEUTSCHE BOERSE NA O.N.		DAXSEC.FIN.SERV. TR.IN.		DAXSUBSEC.SEC.SBROK.TR.IN.		DAX (PERFORMANCE-INDEX)	
	Price	Performance in %	Price	Performance in %	Price	Performance in %	Price	Performance in %
10/01/2013	1.646.62	0.00%	867.86	0.00%	438.04	0.00%	8.689.14	0.00%
10/02/2013	1.635.48	-0.68%	863.80	-0.47%	435.62	-0.55%	8.629.42	-0.69%
10/03/2013	1.626.47	-1.22%	858.10	-1.12%	431.27	-1.55%	8.597.91	-1.05%
10/04/2013	1.619.90	-1.62%	856.29	-1.33%	430.01	-1.83%	8.622.97	-0.76%
10/07/2013	1.611.73	-2.12%	850.16	-2.04%	428.63	-2.15%	8.591.58	-1.12%
10/08/2013	1.619.85	-1.63%	847.50	-2.35%	430.77	-1.56%	8.555.89	-1.53%
10/09/2013	1.610.43	-2.20%	845.81	-2.54%	427.09	-2.50%	8.516.69	-1.98%
10/10/2013	1.637.26	-0.57%	855.23	-1.46%	435.24	-0.64%	8.685.77	-0.04%
10/11/2013	1.658.42	0.72%	859.26	-0.99%	439.25	0.28%	8.724.83	0.41%
10/14/2013	1.660.58	0.85%	860.43	-0.96%	439.56	0.35%	8.723.81	0.40%
10/15/2013	1.663.38	0.41%	864.29	-0.41%	440.13	0.48%	8.804.44	1.33%
10/16/2013	1.662.02	0.94%	866.47	-0.16%	441.25	0.73%	8.846.00	1.81%
10/17/2013	1.684.01	2.27%	871.65	0.44%	445.80	1.77%	8.811.98	1.41%
10/18/2013	1.674.37	1.69%	880.77	1.49%	446.46	1.92%	8.865.10	2.03%
10/21/2013	1.686.92	2.45%	884.32	1.90%	448.52	2.39%	8.867.22	2.05%
10/22/2013	1.712.83	4.02%	888.11	2.33%	452.70	3.35%	8.947.46	2.97%
10/23/2013	1.675.41	1.75%	879.92	1.39%	444.81	1.55%	8.919.86	2.66%
10/24/2013	1.674.00	1.66%	881.82	1.61%	445.00	1.59%	8.980.63	3.35%
10/25/2013	1.666.31	1.20%	881.34	1.55%	444.43	1.46%	8.985.74	3.41%
10/28/2013	1.643.34	-0.20%	876.12	0.95%	439.30	0.29%	8.978.65	3.33%
10/29/2013	1.623.59	-1.40%	870.70	0.33%	431.15	-1.57%	9.022.04	3.83%
10/30/2013	1.636.05	-0.64%	873.36	0.63%	435.30	-0.63%	9.010.27	3.70%
10/31/2013	1.594.20	-3.16%	864.84	-0.35%	424.81	-3.02%	9.033.92	3.97%

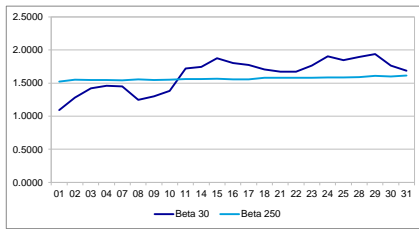
You can define up to three ISINs as peer group and up to three Indices both of the Deutsche Börse universe for these performance comparisons. If you want to modify the peer group or index selection, please do not hesitate to contact the Issuer/Primary Market Relations hotline via e-mail: StockReport@deutsche-boerse.com. The issuer services hotline will be delighted to assist you on trading days from 9.00 am CET till 5.00 pm CET.

Index Affiliation

DEUTSCHE BOERSE NA O.N.

Index Key Figures - DAX (PERFORMANCE-INDEX)

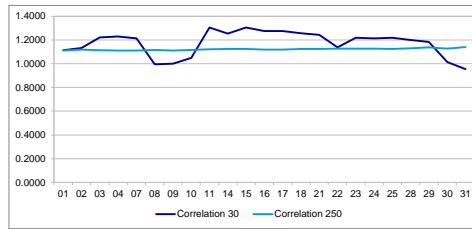
Beta



The Beta describes the correlated volatility of the security in relation to the volatility of the index over a period of time (30 or 250 days).

$\beta < 0$: The security generally moves in the opposite direction as compared to the index
 $\beta = 0$: Movement is uncorrelated with the movement of the index
 $0 < \beta < 1$: Movement is generally in the same direction as, but less than the movement of the index
 $\beta = 1$: Movement is generally in the same direction and amount as the movement of the index
 $\beta > 1$: Movement is generally in the same direction as, but more than the movement of the index

Correlation



Correlation is a statistical measure that describes how the security moves in relation to the index over a period of time (30 or 250 days).

$C = 1$: Perfect positive correlation implies that the security will move in lockstep, in the same direction
 $C = 0$: The movements of the security and the index are said to have no correlation; they are completely random.
 $C = -1$: Perfect negative correlation means that the security moves will move in the opposite direction of the index

Day	DAX (PERFORMANCE-INDEX)				PRIME ALL SH. P-IN.			
	Beta 30	Beta 250	Correlation 30	Correlation 250	Beta 30	Beta 250	Correlation 30	Correlation 250
10/01/2013	1.0944	1.5226	1.1129	1.1103	1.1704	1.6082	1.1423	1.1060
10/02/2013	1.2817	1.5502	1.1319	1.1179	1.3624	1.6375	1.1543	1.1137
10/03/2013	1.4236	1.5474	1.2216	1.1135	1.5145	1.6345	1.2430	1.1093
10/04/2013	1.4622	1.5470	1.2207	1.1119	1.5545	1.6339	1.2476	1.1074
10/07/2013	1.4479	1.5426	1.2140	1.1094	1.5418	1.6297	1.2351	1.1054
10/08/2013	1.2486	1.5546	0.9954	1.1159	1.3467	1.6413	1.0169	1.1114
10/09/2013	1.3018	1.5459	1.0001	1.1113	1.4282	1.6313	1.0289	1.1062
10/10/2013	1.3830	1.5524	1.0496	1.1159	1.5330	1.6390	1.0938	1.1116
10/11/2013	1.7190	1.5607	1.3047	1.1224	1.8558	1.6492	1.3299	1.1180
10/14/2013	1.7430	1.5619	1.2539	1.1230	1.9089	1.6495	1.2836	1.1186
10/15/2013	1.8761	1.5641	1.3050	1.1238	2.0532	1.6511	1.3354	1.1192
10/16/2013	1.8030	1.5552	1.2762	1.1191	1.9639	1.6413	1.3026	1.1141
10/17/2013	1.7763	1.5581	1.2747	1.1200	1.9337	1.6443	1.2973	1.1149
10/18/2013	1.7080	1.5819	1.2571	1.1241	1.8614	1.6722	1.2777	1.1202
10/21/2013	1.6719	1.5814	1.2434	1.1251	1.8075	1.6712	1.2601	1.1212
10/22/2013	1.6739	1.5811	1.1379	1.1259	1.8191	1.6708	1.1612	1.1219
10/23/2013	1.7632	1.5801	1.2178	1.1280	1.8968	1.6734	1.2295	1.1238
10/24/2013	1.9035	1.5842	1.2126	1.1260	2.0520	1.6750	1.2227	1.1223
10/25/2013	1.8456	1.5854	1.2173	1.1252	1.9849	1.6762	1.2239	1.1214
10/29/2013	1.8948	1.5897	1.1995	1.1284	2.0453	1.6805	1.2077	1.1245
10/29/2013	1.9373	1.6081	1.1844	1.1382	2.1017	1.7007	1.1964	1.1347
10/30/2013	1.7636	1.5996	1.0136	1.1267	1.9258	1.6923	1.0276	1.1236
10/31/2013	1.6888	1.6126	0.9542	1.1407	1.8786	1.7086	0.9855	1.1391

Index Weigthing

Last in Month	Market Cap	Weight
CDAX-GESAMTINDEX (PERF)	10,205.28	1.08%
DAX INTERN. 100 TR EUR	10,701.85	0.90%
DAX PERFORMANCE-INDEX	10,205.28	1.33%
DAXPL.MAXIM.DIVI.TR EUR	76.11	6.69%
DAXPLUS MAX.SR.GER.TR EUR	104.52	9.64%
DAXPLUS MV.GER.TR EUR	89.00	8.30%
DAXPLUS SEASONAL ST.TR	10,205.28	1.33%
DAXSEC. ALL.FIN.SERV.TR	10,701.85	29.80%
DAXSEC.FIN.SERV.TR	10,205.28	45.10%
DAXSUB.ALL.SEC.BRO.TR	10,701.85	85.91%
DAXSUBSEC.SEC.SBROK.PR	10,205.28	97.27%
DAXSUPERSECTOR FIRE TR	2,845.75	9.64%
DIVDAX TR	10,205.28	2.51%
HDAX PERFORMANCE-INDEX	10,205.28	1.10%
PRIME ALL SH. TR	10,205.28	1.05%

Index Ranking

12 Months Ranking	Metrics	DAX
Rank MarketCap		21
Rank MarketCap Previous Month		22
MarketCap in Mio		10,545.55
Rank Turnover		28
Rank Turnover Previous Month		28
Turnover in Mio (12 Month)		9,306.75
Comment		

Nominal value and free float

Index	Freefloat in %	Nominal Value
CDAX-GESAMTINDEX (PERF)	95.36%	193,000,000
DAX INTERN. 100 TR EUR	100.00%	193,000,000
DAX PERFORMANCE-INDEX	95.36%	193,000,000
DAXSEC. ALL.FIN.SERV.TR	100.00%	193,000,000
DAXSEC.FIN.SERV.TR	95.36%	193,000,000
DAXSUB.ALL.SEC.BRO.TR	100.00%	193,000,000
DAXSUBSEC.SEC.SBROK.TR	95.36%	193,000,000
DAXSUPERSECTOR FIRE TR	95.36%	53,818,092
HDAX PERFORMANCE-INDEX	95.36%	193,000,000
PRIME ALL SH. TR	95.36%	193,000,000

Index Events

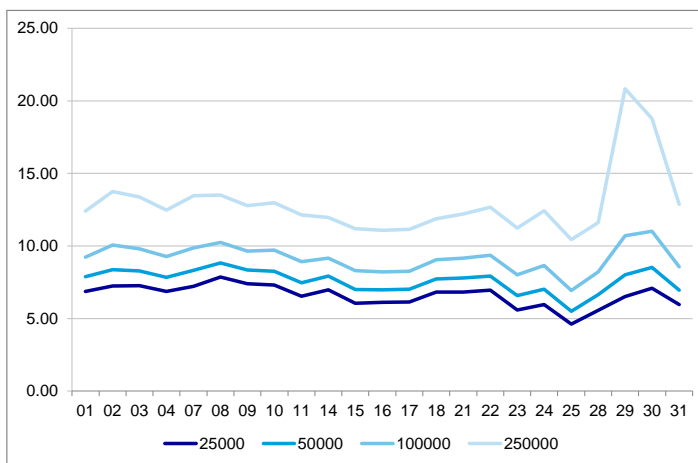
No Index Event information available



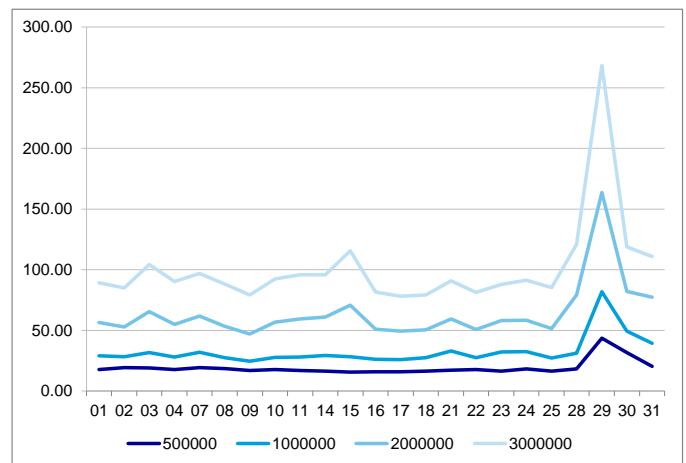
DEUTSCHE BOERSE NA O.N.

[Back to Overview](#)

XLM 25000 - 250000



XLM 500000 - 3000000



XLM		25000	50000	100000	250000	500000	1000000	2000000	3000000	4000000	5000000
Average		6.60	7.62	9.15	12.92	19.34	32.60	64.03	101.26	134.38	169.67
Minimum		4.62	5.51	6.93	10.44	15.75	24.77	47.11	78.32	105.64	135.83
Maximum		7.86	8.83	11.02	20.83	43.56	81.91	163.65	268.56	369.72	472.06
10/01/2013		6.88	7.89	9.24	12.40	17.73	29.09	56.62	89.35	117.88	148.63
10/02/2013		7.25	8.37	10.08	13.76	19.42	28.42	52.99	85.05	114.22	145.23
10/03/2013		7.26	8.29	9.80	13.38	19.12	31.90	65.42	104.29	134.23	167.56
10/04/2013		6.88	7.84	9.28	12.48	17.84	28.05	55.07	90.26	120.16	155.22
10/07/2013		7.23	8.32	9.88	13.46	19.48	32.13	61.82	96.93	125.54	157.76
10/08/2013		7.86	8.83	10.24	13.51	18.59	27.46	53.39	88.32	114.86	145.12
10/09/2013		7.40	8.34	9.65	12.79	17.07	24.77	47.11	79.33	108.45	142.42
10/10/2013		7.31	8.26	9.71	12.99	17.86	27.70	56.77	92.54	123.80	156.79
10/11/2013		6.54	7.46	8.92	12.15	17.04	28.02	59.40	95.89	128.35	158.37
10/14/2013		6.98	7.93	9.17	11.96	16.46	29.39	60.97	96.01	124.88	156.52
10/15/2013		6.05	7.01	8.30	11.18	15.75	28.37	70.87	115.59	151.75	183.27
10/16/2013		6.13	6.97	8.22	11.09	16.04	26.32	51.03	81.77	108.55	138.71
10/17/2013		6.14	7.03	8.27	11.16	15.84	26.04	49.35	78.32	105.98	136.55
10/18/2013		6.83	7.74	9.06	11.88	16.42	27.52	50.59	79.14	105.64	135.83
10/21/2013		6.84	7.80	9.17	12.21	17.30	33.13	59.59	90.98	118.10	146.35
10/22/2013		6.97	7.92	9.37	12.68	17.74	27.46	50.64	81.38	108.56	138.84
10/23/2013		5.59	6.58	8.01	11.24	16.41	32.40	58.28	87.91	113.98	143.64
10/24/2013		5.96	7.02	8.65	12.43	18.37	32.56	58.51	91.45	119.17	152.06
10/25/2013		4.62	5.51	6.93	10.44	16.53	27.26	51.65	85.33	114.43	148.73
10/28/2013		5.57	6.65	8.21	11.61	18.28	31.23	79.38	120.90	161.61	191.16
10/29/2013		6.51	8.01	10.71	20.83	43.56	81.91	163.65	268.56	369.72	472.06
10/30/2013		7.08	8.53	11.02	18.78	31.71	49.35	82.12	118.77	160.61	208.01
10/31/2013		5.96	6.96	8.57	12.88	20.35	39.32	77.47	110.97	140.26	173.58

Measurement for the liquidity of a security in the order book of the electronic trading system Xetra on the basis of the implicit transaction costs.

As a rule, the more liquid a market/transaction, the lower is its implicit transaction cost. The Xetra Liquidity Measure (XLM) measures liquidity and expresses the implicit transaction costs as a single figure. These costs are calculated as average of a minute-by-minute created hypothetical order without limit. At each point in time a theoretical, fair price is set, which ranges exactly between the best bid and the best ask order. The difference between this average price and the average execution price of the hypothetical order amounts to the implicit transaction costs.

The XLM is presented in basis points (100 basis point = 1 percent) in relation to the Market Impact costs of a certain order volume for the round trip (opening and closing a position in one point of time). For example, a XLM of 10 basis points and EUR 100,000 order volume means that the Market Impact costs of buying and selling a certain instrument are equal to EUR 100. Deutsche Börse provides the Xetra Top Liquids on daily figures for the last trading day. The larger the difference, and thus the XLM, the lower is the liquidity of a security.

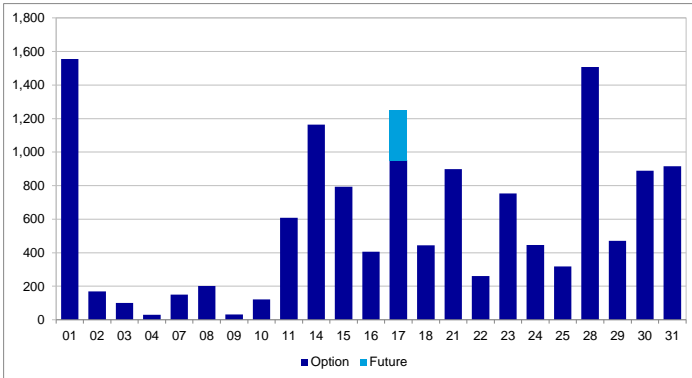
For more information see on:
www.xetra.com > trading&clearing > Xetra > Xetra Liquidity Measure



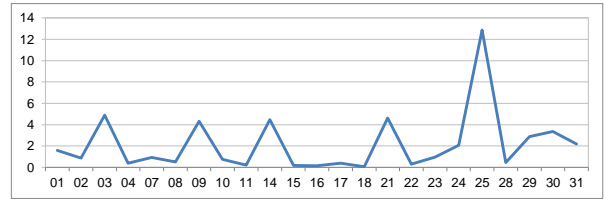
DEUTSCHE BOERSE NA O.N.

[Back to Overview](#)

Traded Contracts of Eurex derivatives



Put/Call-Ratio



Put/call ratio (PCR) is a technical indicator demonstrating investors' sentiment. It shows how many puts are traded in relation to the numbers of traded calls per underlying.

PCR = traded puts / traded calls

Day	Total				Option				Future			
	Traded Contracts	Trades Eurex	Capitalised Volume in EUR	Put Call Ratio (Traded Contracts)	Traded Contracts	Trades Eurex	Capitalised Volume in EUR	Put Call Ratio (Traded Contracts)	Traded Contracts	Trades Eurex	Capitalised Volume in EUR	Put Call Ratio (Traded Contracts)
Total	13,486	788	74,766,406	--	13,186	787	73,013,923	--	300	1	1,752,483	--
10/01/2013	1,555	73	8,270,600	--	1,555	73	8,270,600	1.583	0	0	0	0
10/02/2013	170	20	919,400	--	170	20	919,400	0.868	0	0	0	0
10/03/2013	100	12	519,800	--	100	12	519,800	4.882	0	0	0	0
10/04/2013	29	6	161,600	--	29	6	161,600	0.381	0	0	0	0
10/07/2013	151	15	783,600	--	151	15	783,600	0.936	0	0	0	0
10/08/2013	202	16	1,069,200	--	202	16	1,069,200	0.496	0	0	0	0
10/09/2013	32	5	175,400	--	32	5	175,400	4.333	0	0	0	0
10/10/2013	121	16	656,300	--	121	16	656,300	0.754	0	0	0	0
10/11/2013	609	51	3,575,200	--	609	51	3,575,200	0.204	0	0	0	0
10/14/2013	1,164	34	5,732,400	--	1,164	34	5,732,400	4.465	0	0	0	0
10/15/2013	793	55	4,582,200	--	793	55	4,582,200	0.184	0	0	0	0
10/16/2013	406	28	2,193,300	--	406	28	2,193,300	0.160	0	0	0	0
10/17/2013	1,251	64	7,187,842	--	951	63	5,435,359	0.380	300	1	1,752,483	0
10/18/2013	444	40	2,557,904	--	444	40	2,557,904	0.065	0	0	0	0
10/21/2013	898	63	4,817,201	--	898	63	4,817,201	4.613	0	0	0	0
10/22/2013	260	26	1,553,204	--	260	26	1,553,204	0.294	0	0	0	0
10/23/2013	753	19	4,446,191	--	753	19	4,446,191	0.956	0	0	0	0
10/24/2013	446	31	2,266,400	--	446	31	2,266,400	2.076	0	0	0	0
10/25/2013	319	21	1,554,600	--	319	21	1,554,600	12.870	0	0	0	0
10/28/2013	1,508	59	9,561,863	--	1,508	59	9,561,863	0.438	0	0	0	0
10/29/2013	471	41	2,448,900	--	471	41	2,448,900	2.893	0	0	0	0
10/30/2013	889	54	4,740,600	--	889	54	4,740,600	3.358	0	0	0	0
10/31/2013	915	39	4,992,700	--	915	39	4,992,700	2.199	0	0	0	0

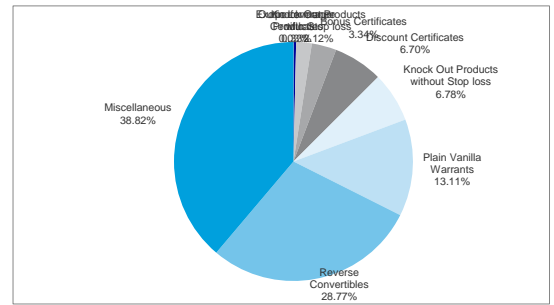
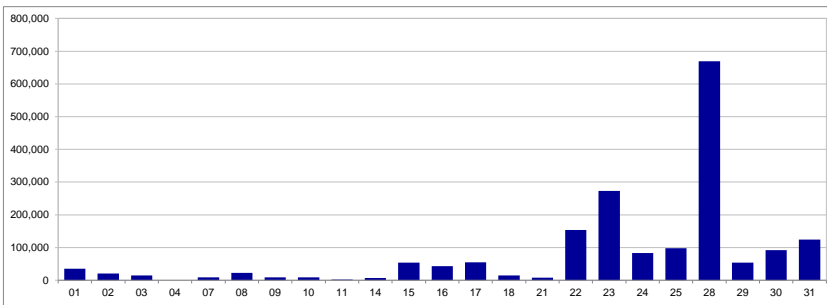
Eurex Products

Product	Option/Future	Traded Contracts	%	Trades Eurex	Capitalised Volume in EUR	Put Call Ratio (Traded Contracts)
DB1	Option	13,186	97.78%	787	73,013,923	1.048
DB1H	Future	300	2.22%	1	1,752,483	
DB1F	Future	0	0.00%	0	0	
DB1G	Future	0	0.00%	0	0	

DEUTSCHE BOERSE NA O.N.

[Back to Overview](#)

Orderbook Turnover (€) for all certificates based on DE0005810055



Orderbook Turnover (€)											
Day Calendar	Total	Exotic Leverage Products	Outperformance Certificates	Knock Out Products with Stop loss	Bonus Certificates	Discount Certificates	Knock Out Products without Stop loss	Plain Vanilla Warrants	Reverse Convertibles	Miscellaneous	
Total	1,851,325.75	558.00	6,057.00	39,156.00	61,748.70	124,118.38	125,510.63	242,795.40	532,678.70	718,702.94	
10/01/2013	35,667.62	0.00	0.00	0.00	0.00	0.00	20,332.62	15,335.00	0.00	0.00	
10/02/2013	20,988.40	0.00	0.00	0.00	0.00	0.00	4,800.00	14,700.00	0.00	1,488.40	
10/03/2013	15,000.00	0.00	0.00	0.00	0.00	0.00	0.00	15,000.00	0.00	0.00	
10/04/2013	0.00	0.00	0.00	0.00	0.00	0.00	0.00	0.00	0.00	0.00	
10/07/2013	8,896.54	0.00	0.00	0.00	0.00	0.00	5,143.50	3,670.00	0.00	83.04	
10/08/2013	22,382.82	0.00	0.00	0.00	22,740.00	0.00	242.82	0.00	0.00	0.00	
10/09/2013	9,074.00	0.00	0.00	0.00	0.00	0.00	4,000.00	0.00	0.00	5,074.00	
10/10/2013	9,301.68	0.00	0.00	0.00	0.00	0.00	140.18	8,658.00	0.00	503.50	
10/11/2013	1,758.80	558.00	0.00	0.00	0.00	0.00	389.00	0.00	0.00	811.80	
10/14/2013	7,026.90	0.00	0.00	0.00	0.00	0.00	0.00	6,020.00	1,006.90	0.00	
10/15/2013	53,707.30	0.00	0.00	0.00	0.00	3,364.50	0.00	0.00	7,883.80	42,459.00	
10/16/2013	42,757.90	0.00	0.00	0.00	0.00	0.00	4,800.00	34,795.00	0.00	3,162.90	
10/17/2013	54,483.64	0.00	0.00	925.00	0.00	39,722.48	430.00	12,700.00	0.00	706.16	
10/18/2013	14,562.12	0.00	0.00	0.00	3,390.92	0.00	9,931.20	1,240.00	0.00	0.00	
10/21/2013	8,315.15	0.00	0.00	0.00	2,825.35	0.00	2,484.80	80.00	0.00	2,925.00	
10/22/2013	153,949.47	0.00	0.00	1,125.00	0.00	0.00	1,310.80	19,263.00	0.00	132,250.67	
10/23/2013	272,697.63	0.00	0.00	1,530.00	0.00	0.00	836.06	13,675.00	0.00	256,656.57	
10/24/2013	82,933.95	0.00	0.00	0.00	0.00	29,651.40	3,081.00	7,800.00	988.10	41,413.45	
10/25/2013	98,151.58	0.00	0.00	0.00	0.00	0.00	204.48	19,425.00	15,007.50	63,514.60	
10/28/2013	669,413.90	0.00	0.00	3,596.00	0.00	0.00	20,228.05	31,900.00	502,850.00	110,839.85	
10/29/2013	53,495.28	0.00	6,057.00	8,980.00	0.00	4,389.00	248.88	22,152.40	4,942.40	6,725.60	
10/30/2013	91,710.60	0.00	0.00	0.00	0.00	32,426.00	25,405.00	13,475.00	0.00	20,404.60	
10/31/2013	124,450.47	0.00	0.00	23,000.00	32,792.43	14,565.00	21,502.24	2,907.00	0.00	29,683.80	



Explanation and Disclaimer

DEUTSCHE BOERSE NA O.N.

Should you have questions concerning these data, please do not hesitate to contact the listing center hotline via e-mail: issuerservices@deutsche-boerse.com or via phone +49-69-211-1-88 88.

The issuer services hotline will be delighted to assist you on trading days from 9.00 am CET till 5.00 pm CET.

Your investor relations department should check the information on shareholder structure and make corrections to the data where necessary. We are using the number of shares and the holdings of particular investors for the calculation of our equity indices and are concerned to keep these data as accurate and up-to-date as possible. In case you have further questions, new information or corrections with respect to issued capital or shareholder structure please contact stoxindex@stox.com.

Explanation

Adjusted Price:	Is the price after it has been adjusted for exogenous influences, such as price-relevant changes to capital, in order to achieve historical comparability.
Designated Sponsor	Banks or other financial service providers who furnish binding quotes in electronic trading for the purchase or sale of stocks, thereby offsetting temporary imbalances between supply and demand for less liquid stocks.
Free float	Irrespective of the size of a shareholding, the definition of free float includes all shareholdings held by asset managers and trust companies, investment funds and pension funds, holding companies; as well as capital investment companies or foreign investment companies in their respective special fund assets with the purpose of pursuing short-term investment strategies.
Indices	Are overviews of the levels of various Deutsche Börse AG indices at the end of the various trading days of the reporting month.
Order Book Turnover	Is the stock-exchange turnover price on Xetra and on FWB Frankfurter Wertpapierbörse. All transactions are taken into account for which an official price was determined in Deutsche Börse AG's trading systems. The volumes traded are calculated in single counting.
Other Exchanges	The following stock exchanges are included: Bayerische Börse Börse Berlin Börse Düsseldorf Börse Hamburg Börse Hannover Börse Stuttgart Tradegate
Performance	Is the percentage change of daily close prices.
Xetra Frankfurt Specialist	Xetra Frankfurt Specialist trading combines the advantages of electronic trading with the personal support and knowledge of the Xetra Frankfurt Specialists.

For more information please have a look on the Deutsche Börse glossary on www.deutsche-boerse.com > About Us > Services > Know-how > Stock Exchange A-Z